

Light is intelligent

## e:cue SYMPHOLIGHT 2.0

The powerful lighting control software for simple to complex lighting applications. **Light is OSRAM**

Our Brands

**sit**eco traxon e:cue

**OSRAM**



National Gymnastics Arena – Baku, Aserbaidshan



Skatepark in the Otto-Dullenkopf-Park – Karlsruhe, Germany

### Benefits at a Glance

- Innovative lighting control software with an intuitive graphic user interface for simple to complex lighting shows
- Patching, device setup, programming and execution in one single application
- Easy content creation
- Easy control of both DMX and DALI fixtures



Chevy Chase Pavilion – Washington D.C., USA

# SYMPHOLIGHT 2.0



Developed with superior usability in mind, e:cue SYMPHOLIGHT is a simple yet powerful lighting control software with an intuitive graphic user interface. Based on advanced timeline programming, SYMPHOLIGHT combines easy fixture and project set-up, content creation, automation and execution control in a single application. With powerful scripting capabilities, visual automation tools, and remote control via any web browser, SYMPHOLIGHT provides easy and playful design experiences even for the most sophisticated lighting and media applications.

SYMPHOLIGHT 2.0 includes innovative and intuitive tools that facilitate the design of simple to complex lighting shows. Position lighting fixtures in a project plan and configure devices in the central control system.

In addition to programming special lighting effects, video-to-light pixel mapping, visualization of the lighting installation is possible. Advanced triggering and visual automation tools provide capabilities for a wide spectrum of lighting installations, including multimedia, show and functional lighting control as well as building automation integration.

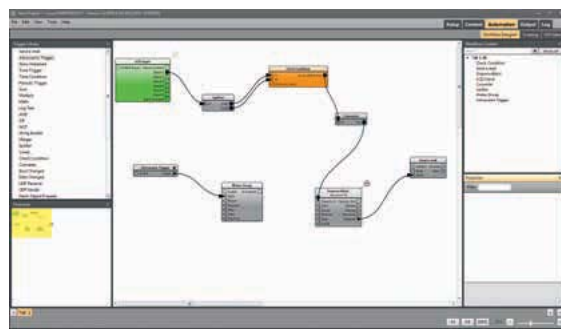
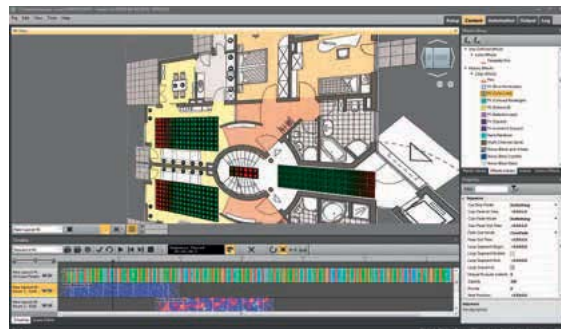
## Features at a glance

- Patching, device setup, programming and execution in one single application
- Easy control of both DMX and DALI fixtures
- Full integration and support for all e:cue SYMPL Modular Controller Range devices and many classic e:cue devices, like Butlers and Glass-Touches
- Powerful “Workflow Designer”, a visual automation tool for easy and extremely versatile automation of any kind of internal or external data and source
- 3D support for advanced projects with more than just a flat surface
- Easy programming even for complex routines without usage of scripting languages
- Simulation capability for both design and execution stages
- HTML5-based Graphic User Interface (GUI) Editor for wired or wireless show control via any web browser on any device or Operating System

## System requirements

Minimum configuration for all sizes:

- Microsoft® Windows® 7 SP1 32 Bit or better
- Internet Explorer 10 or better
- 4 GB RAM
- A minimum of 20 GB hard disk space
- Dual-Core processor or better
- DirectX9 supported graphics adapter
- A minimum of one Ethernet interface for connections to engines and interfaces



**OSRAM GmbH**

Head office:

Marcel-Breuer-Strasse 6  
80807 Munich, Germany  
Phone +49 89 6213-0  
Fax +49 89 6213-2020  
www.osram.com

**Siteco Beleuchtungstechnik GmbH**

Head office:

Georg-Simon-Ohm-Strasse 50  
83301 Traunreut, Germany  
Phone +49 8669 33-0  
Fax +49 8669 33-397  
www.siteco.com

**Our Brands**

**siteco** **traxon** **ecue**

Order number 802P037GB  
LS Marketing 10.2016 | Technical modifications and errors subject to change.



**OSRAM**