

RECALLED PRODUCT: PAR46, PAR56 and PAR64
SOLD BY: OSRAM SYLVANIA Inc., Exeter, NH
March 25, 2019

Product Description:

This recall involves certain PAR46, PAR56 & PAR64 lamps. The recalled lamps are sealed beam Tungsten Halogen quartz and Incandescent lamps consisting of a parabolic glass reflector & front lens. The lens diameter is 6" (PAR46), 7" (PAR56) or 8" (PAR64) in diameter. The words "Made in China" are printed on a black & white label affixed to both the single box and the case package. The lamps defined here also say Made in China on the back of the lamp reflector as shown in the images on the last page. The model numbers are listed below, which do not appear on the lamps themselves, but appear on the box labels. It should be noted that only lamps with these part #s that additionally say "Made in China" are part of this recall.

Date of Manufacture: November 2016 – November 2018

Part #	Description
14974	350W PAR56 SP 75V
55159	500W PAR64 MFL 120V
55160	500W PAR64 WFL 120V
55161	500W PAR64 NSP 120V
55162	300W PAR56 MFL 130V
55163	300W PAR56 NSP 120V
55164	300W PAR56 MFL 120V
55165	300W PAR56 WFL 120V

Part #	Description
55166	200W PAR56 30V
55167	200W PAR56 MFL 120V
55169	200W PAR46 MFL 120V
56214	1000W PAR64 VNSP FFN 120V
56215	1000W PAR64 NSP FFP 120V
56216	1000W PAR64 WFL FFS 120V
56217	1000W PAR64 MFL FFR 120V

All of the reports are related to Large PAR lamps above sourced from a specific supplier. After evaluating lamps of various wattages and date codes from this supplier, we could not isolate the identified risks to a specific product type or date code. We are therefore initiating a recall of all Large PAR lamps sourced from this supplier since November 2016.

You should immediately stop using the lamps, remove them from the fixture, and follow instructions on the attached document entitled RMA FORM & DIRECTIONS to arrange for their return to OSRAM.

All inventory of the recalled products should be returned to OSRAM. Unfortunately, we are unable to offer you a suitable replacement for these products, so instead you will be reimbursed for the price you paid to purchase the product, within reason.

We sincerely apologize for this development. If you have any questions, please feel free to contact us at 1-855-865-9271 or email PARRECALL@osram.com.

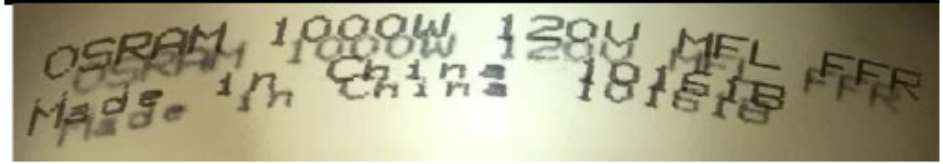


Photos Product

OSRAM PAR Made in China

Below is an example of the ink etching on each lamp, located on the top of the reflector (the back side of the lamp).

The Manufacturing location appears in the 2nd row. Recalled Products will only say Made in China.



Box Labels

Recalled Product Label Identifiers:

OSRAM PAR Made in China



INDIVIDUAL BOX LABEL IDENTIFICATION

CASE LABEL IDENTIFICATION



OSRAM SYLVANIA Inc.

Entertainment
129 Portsmouth Ave.
Exeter, NH 03833
www.osram.us

OSRAM

LARGE PAR RECALL RETURN FORM AND DIRECTIONS

** If you did not purchase directly from OSRAM please print a copy of your original receipt for reimbursement that shows the price you paid and the company you purchased from.

1. On this form enter the quantity of each part you are returning and the number of total boxes of the shipment back to us. Print out this form, and place it in the box(es). **End users: include Form and receipt - **Both items must be included in order for you to receive reimbursement.**
2. Return the lamps in their original boxes if available. If you do not have the original boxes, package them in a way that ensures they are protected and will not be damaged in transit.
3. Weigh each box
 - a) If under 150lbs set up a third party FedEx ground shipment with our prepaid FedEx account number: 1925 01997
 - b) If over 150lbs, or if you do not have access to a FedEx account to set up a third party shipment, call 855-865-9271 or email PARRECALL@osram.com to have a pickup arranged and shipping labels sent to you.
 - FedEx will need the following:
 - Number of Boxes
 - Weight of Each Box
 - Size (L X W X H) of Each Box Being Returned
 - Address of Pickup and Company Name
 - Contact Name and Phone Number

Below must be completed and sent back with your product return(s):

Are you an OSRAM direct customer?		Yes	No
If Yes, provide us with your OSRAM Sold to Customer #:			
Contact First Name:		Last Name:	
Company Name:			
Address:			
City:		State/Province:	Country:
Zip Code:			
Part #	Description	Quantity Each	
56217	1000W PAR64 MFL FFR 120V 6/CS 1/SKU		
56215	1000W PAR64 NSP FFP 120V 6/CS 1/SKU		
56214	1000W PAR64 VNSP FFN 120V 6/CS 1/SKU		
56216	1000W PAR64 WFL FFS 120V 6/CS 1/SKU		
55169	200W PAR46 MFL 120V 12/CS 1/SKU		
55166	200W PAR56 30V 12/CS 1/SKU		
55167	200W PAR56 MFL 120V 12/CS 1/SKU		
55164	300W PAR56 MFL 120V 12/CS 1/SKU		
55162	300W PAR56 MFL 130V 12/CS 1/SKU		
55163	300W PAR56 NSP 120V 12/CS 1/SKU		
55165	300W PAR56 WFL 120V 12/CS 1/SKU		
14974	350W PAR56 SP 75V 12/CS 1/SKU		
55159	500W PAR64 MFL 120V 6/CS 1/SKU		
55161	500W PAR64 NSP 120V 6/CS 1/SKU		
55160	500W PAR64 WFL 120V 6/CS 1/SKU		
Total			Total # of Boxes

OSRAM

RETURN PRODUCT PACKING LABEL:
FULFILLMENT AMERICA
C/O OSRAM RETURNS DEPARTMENT
17 PROGRESS ROAD
BILLERICA, MA 01821-5731
USA