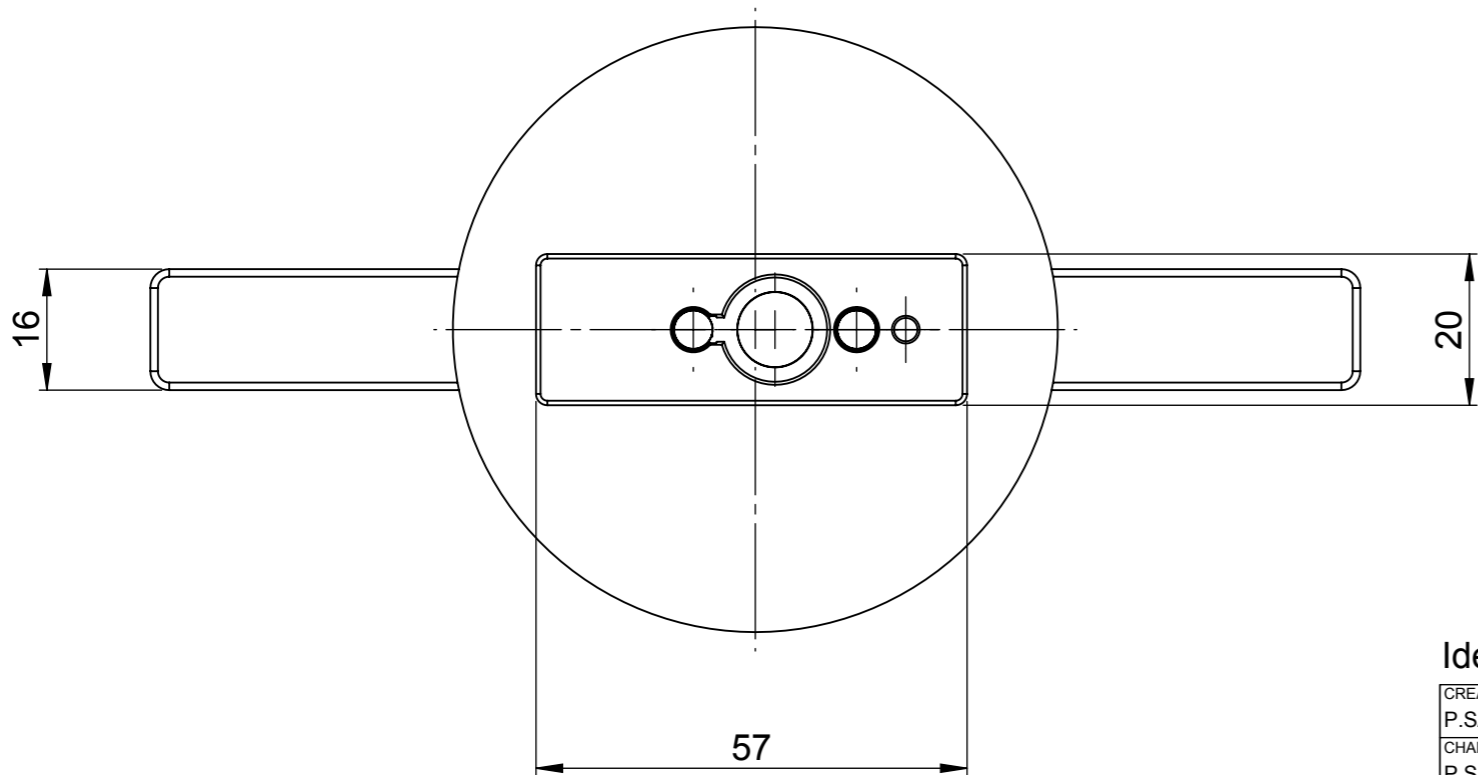
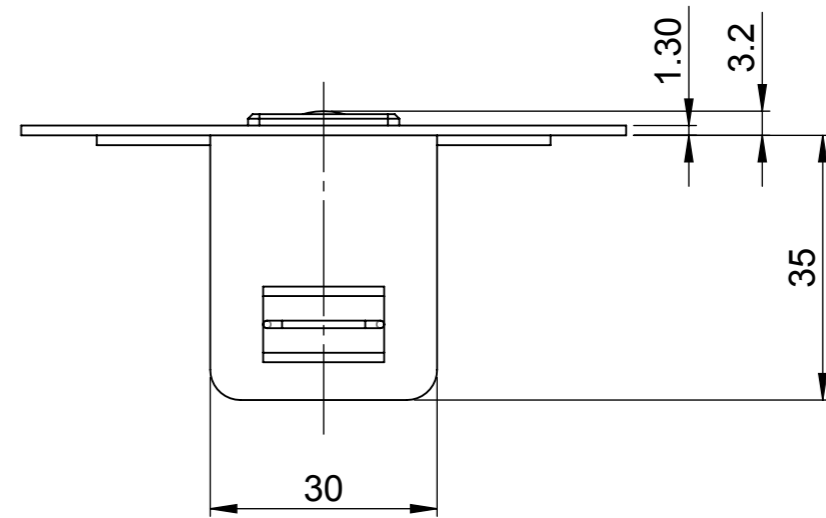
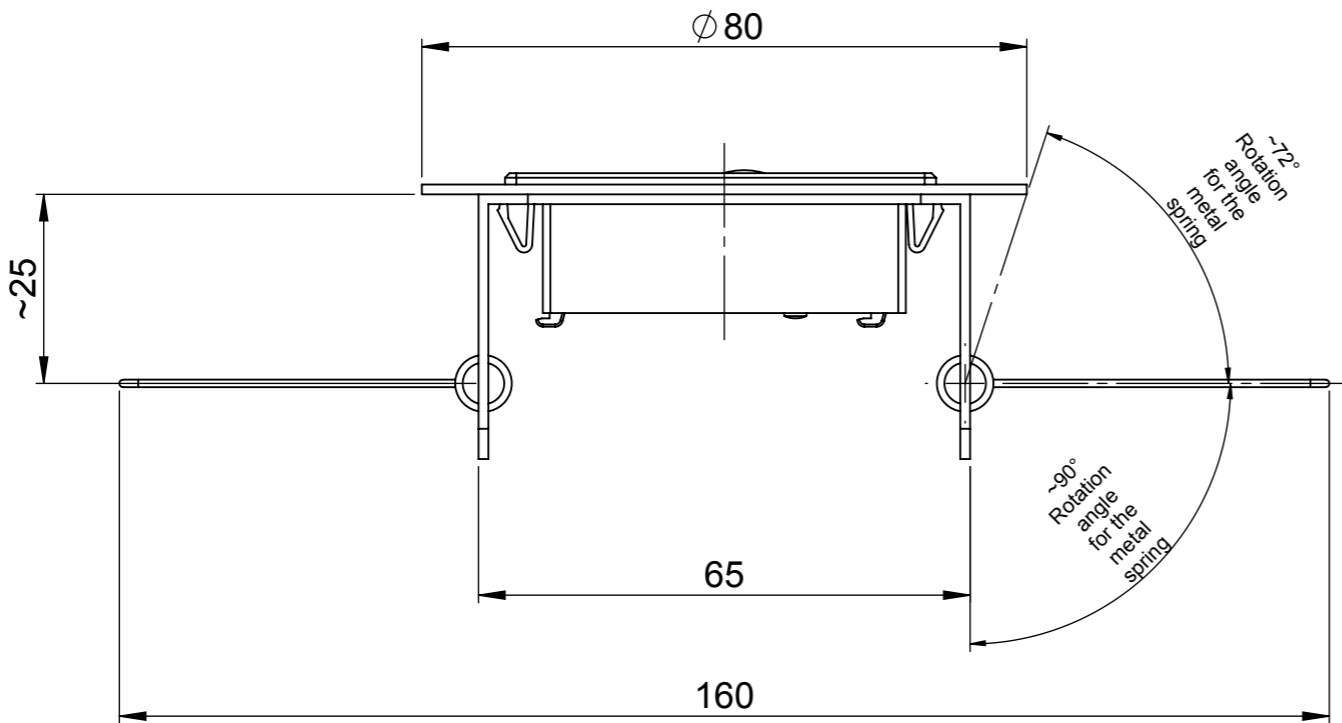
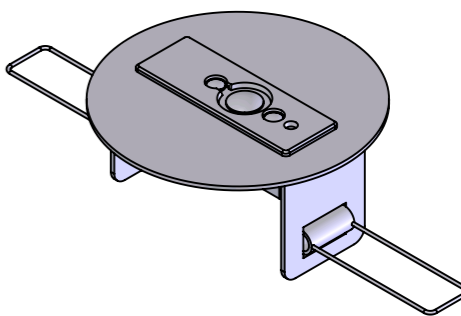



1  
2  
3  
4  
5  
6  
7  
8  
A  
B  
C  
D  
E  
F  
SolidWorks



Recommended drilling diameter: 73mm



Identical to DALI LSPD CI with 9C1-4224109-EN-00

CREATED BY P.SACHSENWEG		CREATED AT 2020/Aug/10		SURFACE FINISH not applicable				GENERAL TOLERANCE  not applicable			 PROJECTION 1			
CHANGED BY P.SACHSENWEG		CHANGED AT 2020/Aug/10		BASIC MATERIAL not applicable										
CHECKED BY P.SACHSENWEG		RELEASE DATE 2020/Aug/11		CALC. WEIGHT / UNIT WEIGHT not applicable		VOLUME / UNIT VOLUME not applicable		NOTES first edition						
CHANGE No.				DESCRIPTION DALI SENSOR LS/PD CI G2								FORMAT A3		
OSRAM  © OSRAM				DOC TYPE	PLM DOC No.		LANGUAGE	VER	DOC TYPE	NEUTRAL FORMAT No.		VER	STATUS	SCALE
				SWD	4237498		EN	00	9C1	4237499		00	RL	1:1
				DOC TYPE	3D MODEL No.		DOC PART	VER	PLM MAT TYPE	PLM MATERIAL No.				PAGE
				SWM	4237497		000	00	DMAT	D30067043				1/1
Released														

9C1 4237499-EN-00  
?RL - Re leased  
?2020-08-11  
?ECS-?DALI SENSOR LS/PD CI G2  
?993-?P, SACHSENWEG-?0LQ (C)