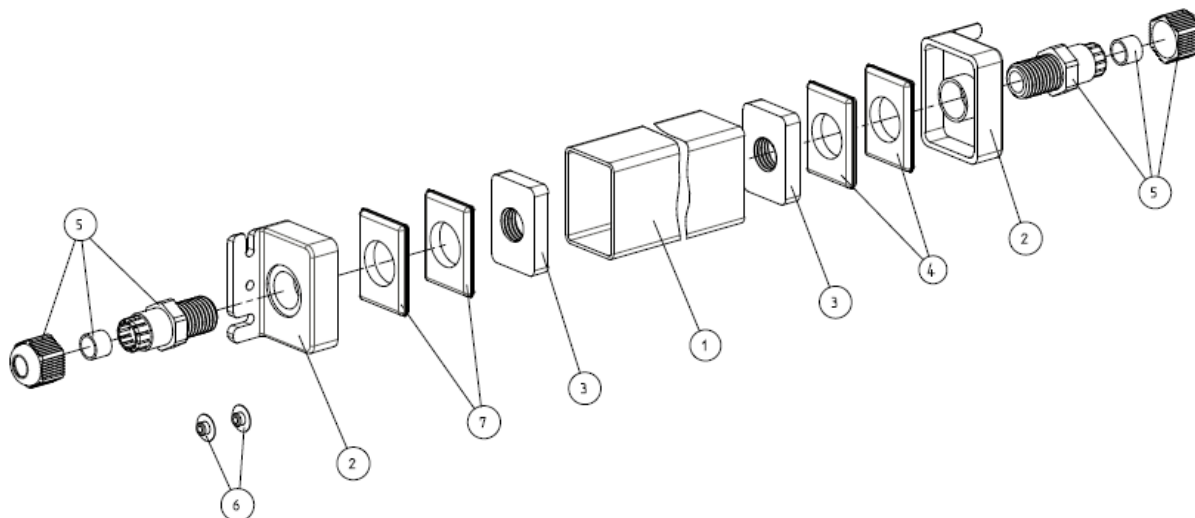


Instruction and Safety advice for OUTKIT version 21 x 30



The housing is developed for electronic control gear (ECG) of OSRAM in a cross section of 21 x 30 mm in order to protect the ECG reliable of humidity in IP67. **OUTKIT® 21 short** is to protect 1lamp ECG in the dimension of 360 x 30 x 21 mm and **OUTKIT® 21 long** to protect 2lamp ECG in the dimensions of 423 x 30 x 21 mm. OUTKIT consists of the square pipe (1) , two screw caps, bulk enclosed seal insert for the use of single wires and 2 pcs. caps (6).

To ensure reliable operation in IP 67 it is necessary that you follow the construction and safety information as below:

Instruction manual:

- To mount the cable screw you need toolings with a wrench size 15.
- Within OUTKIT, the ECG may be mounted with single wires or special ÖLFLEX 400P from company U.I.Lapp GmbH (www.lappkabel.de)

Below, please find the tested and approved types of cables and single wires:

	OUTKIT 21 short	
	Input side	Lamp side
Wires	ÖLFLEX CLASSIC 400 P 2x0.75 for PC II or ÖLFLEX CLASSIC 400 P 3 G 0.75 for PC I	ÖLFLEX CLASSIC 400 P 4x 0.75
Single wires	H 05 V , max. diameter of 2.3 mm incl. a seal insert 3x 2.3	H05 V , max. diameter of 2mm incl. a seal insert 4x 2

	OUTKIT 21 long	
	Input Side	Lamp Side
Wires	ÖLFLEX CLASSIC 400 P 2x0.75 for PC II or ÖLFLEX CLASSIC 400 P 3 G 0.75 for PC I	ÖLFLEX CLASSIC 400 P 7x 0.5
Single Wires	H 05 V , max. diameter of 2.3 mm incl. seal insert 3x 2.3	No opportunity for single wire connection

- For the use of dimmable ECGs you must use 2 additional wires at the input side.
ÖLFLEX CLASSIC 400 P 4x 0.75 or 400 P 5 G 0.75.
- The cover caps (6) are put from outside into the two vents at the end of the ECG and secure the positioning of the ECG within the square pipe.
- Press the cover caps until block of the square pipe and secure it with the tooling of the wrench size 15:

Safety instruction:

1. No guarantee for the type of protection of the system if you use different cable manufacturers.
2. If you use OUTKIT as a semiluminaire for lamps and for different light sources as well as for the use of different ECG brands, we do **not** take **any** warranty.